

**Installation instructions
for 120/160 kVA Tie cabinet**

Contents

1	GENERAL	3
1.1	UNPACKING AND INCOMING INSPECTION.....	3
2	INSTALLATION	3
2.1	ENVIRONMENT	3
2.2	INSTALLATION INSTRUCTIONS.....	3
2.2.1	<i>Mechanical installation</i>	3
2.2.2	<i>Electrical installation and power connections</i>	4
2.2.3	<i>Dimensions</i>	5

1 General

This manual completes the main User's and Installation Guide (1022403), when up to three 120 or 160 kVA UPS units are installed together in the parallel for Redundancy or Capacity system.

Please read first the User's Guide of the UPS and install the Tie Cabinet according to this manual.

1.1 Unpacking and incoming inspection

Unpack the equipment and remove all the packing materials and shipping cartons.

- The equipment must be inspected for damage after shipment. If damage has occurred during transit all the shipping cartons and packing materials should be stored for further investigation. If the damage is visible a claim for shipping damage must be filed immediately.

To file a claim for shipping damage:

- The carrier must be informed within 7 days of receipt of the equipment.

The equipment must be checked against the packing list to verify that the shipment is complete. The equipment is thoroughly inspected at the factory. If there are no damages or discrepancies, the installation may proceed.

2 Installation

2.1 Environment

All the requirements concerning environment described in this Chapter (Installation) must be met. If they are neglected the manufacturer cannot guarantee the safety of personnel during installation or use, or that the unit will function properly.

- Install the UPS and battery cabinets according to the main instruction.
- The following requirements need to met with the Tie cabinet.
 - Provide shelter from the elements (especially moisture)
 - Maintain clearance at front of the Tie cabinet for installation and service.

2.2 Installation instructions

The electrical planning and installation of the Tie cabinet must be done by qualified personnel only.

2.2.1 Mechanical installation

Follow the installation instruction of the UPS indicated in the main User's and Installation Guide (1022403).



Note!

The cabinet must be permanently bolted or welded to the floor using the shipping brackets.

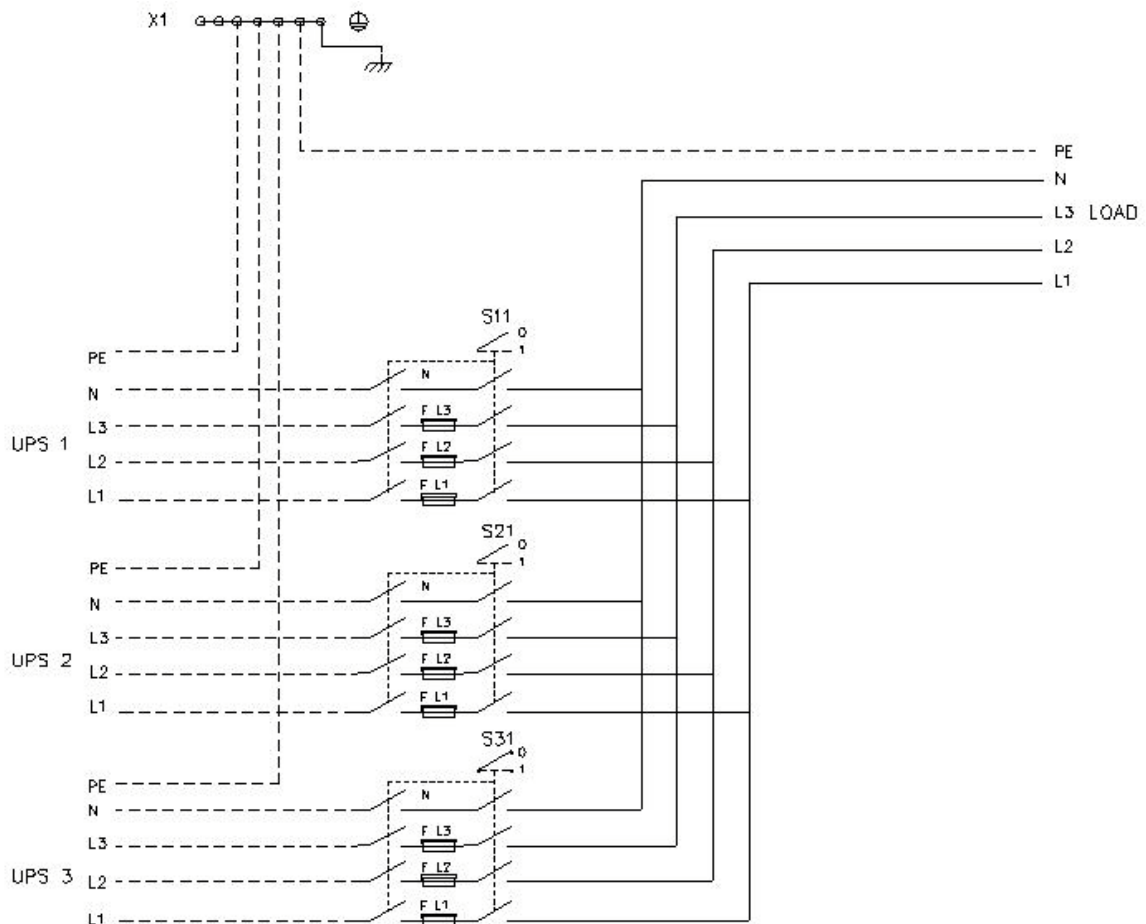
2.2.2 Electrical installation and power connections



Warning!

Some components inside the cabinet contain high voltage, which can injure or kill personnel or damage equipment. All operations inside the cabinet must be carried out only by a qualified electrician.

The wiring between UPS units and the Tie cabinet shall be connected accordingly to the wiring diagram and the wiring procedure below.



CARTRIDGE FUSE LIST (S11, S21, S31)

UPS size	Type	rating	Size(IEC269)	Powerware P/N
120 kVA	gL/gG	200A 690VAC	2NH	8052350
160 kVA	gL/gG	250A 690VAC	2NH	1024563

Figure 1 Wiring diagram of the 120 and 160 kVA Tie cabinet

Please refer to main User's and Installation Guide (1022403) for sizing cables.

Wiring procedure:

1. If not already open, unfasten front door latch and swing door open.
2. Remove the door by opening a screw from the bottom hinge.
3. Place the door to its correct position.

4. Remove the switches S11, S21, S31 and the screws from the plate.
5. Remove cabinet top or bottom wire entry landing plate to drill or punch wire ways.
6. Route input and output cables through wire way to the terminals of the cabinet.
7. System output cables (L1, L2, L3, and N) should be connected to copper bars either top or bottom of the cabinet.
8. System input cables (L1, L2, L3, and N) should be connected next to the fuses: S11, S21, S31.
9. PE cables should be connected to terminal X1 at the bottom of the cabinet.
10. Place the metal plates to correct positions and fix the switches S11-S31 to their correct position.
11. Close the door and secure with a latch.

2.2.3 Dimensions

Weight of the Tie cabinet is 217 kg.

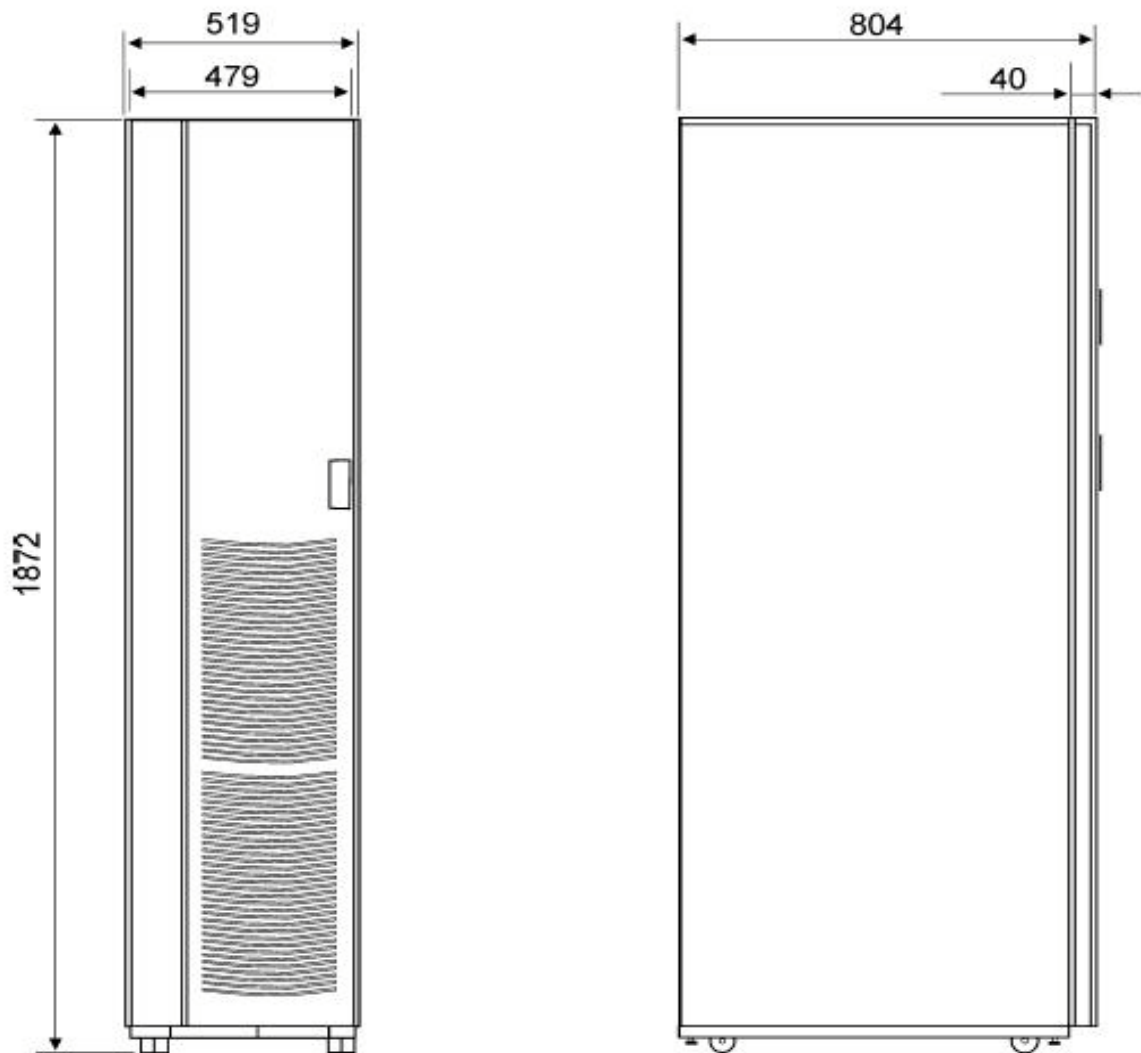


Figure 2 Dimensions of the 120/160 kVA Tie cabinet