

# Eaton 9130 UPS



## Product snapshot

<b>Product rating:</b>	700 to 3000 VA
<b>Voltage</b>	240Vac
<b>Frequency:</b>	50/60 Hz (auto-sensing)
<b>Configuration:</b>	Rackmount or tower

Advanced power protection for:

- IT and networking environments
- Servers, networking gear
- Telecommunications, VoIP, security systems
- Medical systems
- Diagnostics and medical screening
- Patient record archives
- Manufacturing systems
- Chip fabrication
- Pharmaceutical production
- Chemical processing

## Features

- Protects against downtime, data loss and process interruption by providing continuous, clean power
- Offers premium performance with a 0.9 power factor and >95 percent efficiency
- Increases battery service life and system uptime with ABM<sup>®</sup> battery charging technology
- Enables prolonged runtime of essential equipment during power outages by allowing for orderly, remote shutdown of non-critical systems or processes
- Provides installation flexibility with a choice of rack or tower designs, both conserving valuable space
- Ensures data and system integrity with LanSafe<sup>®</sup> power management software
- Provides a two year limited warranty, Warranty +, Startup +, Warranty + Silver and Warranty + Gold service options available.

A one-stop solution provider-partner, Eaton<sup>®</sup> provides world-class power protection, power management and distribution products including uninterruptible power systems (UPSs), DC power systems, award-winning power management software and world-class services. Our Powerware<sup>®</sup> series has been recognised by end-users and industry experts for delivering the highest customer value and satisfaction, as well as for demonstrating insight into customer needs.

The newest Powerware series addition, the **Eaton 9130 UPS**, resolves utility power problems and delivers superior power protection for IT and networking equipment, medical systems, manufacturing process control—or anywhere critical equipment and applications require clean, continuous power.

## Double-conversion design for superior power protection

The 9130 is constantly monitoring power conditions—regulating both voltage and frequency. Even when presented with the most severe power problems, this UPS's output remains within three percent of nominal voltage.

With a wide input voltage range, the 9130 does not depend on batteries to smooth out minor power fluctuations. Batteries are conserved for those times when utility power is highly unstable or completely out. If an outage occurs, the 9130 runs from the battery with zero interruption in power, making this an ideal UPS for sensitive and critical equipment.

## More real power for less cost

**More real power.** High 0.9 output power factor enables the 9130 to provide its full power capability to modern IT equipment that may have a wide range of leading and lagging power factors. With a 0.99 input power factor, this UPS avoids the disturbances that some energy converters tend to cause.

**High efficiency.** The more efficient the UPS, the lower your utility and cooling bills. Even a small increase in efficiency can quickly translate into thousands of dollars. When power

conditions are within acceptable limits, the 9130 can operate in a remarkably high-efficiency mode: 95 percent efficient or higher.

## Advanced design and self-monitoring for premium availability

The 9130 continually monitors voltage, temperature, internal element functions, battery health, battery state-of-charge and runtime remaining. If the UPS detects a potential problem with any of these measures, it sends alarms or takes corrective action, with no interruption in power. At the end of an alarm

condition, the 9130 automatically reverts from bypass to normal operation.

## Stronger, longer battery life with exclusive ABM technology

Most UPS manufacturers on the market today employ a constant 'trickle-charging' system, which can ultimately reduce potential battery service life by as much as 50 percent. In contrast, ABM technology uses sophisticated sensing circuitry and an innovative three-stage charging technique that significantly extends UPS batteries' useful service life while optimizing their recharge

time. The 9130 provides up to 60 days' notice of the end of useful battery service life. You have ample time to hot-swap batteries without ever having to shut down connected equipment.

## External battery modules for extended runtime

During a power outage, internal batteries in the 9130 keep loads running long enough to gracefully shut down systems. Add more runtime at any time, with up to four external battery modules to run systems for hours if necessary. These battery modules are hot-swappable and can be replaced at any time without

### TOWER MODELS BATTERY RUNTIMES<sup>1</sup>

Load (VA/Watts)	% Of Load	Internal Batteries	w/1 EBM	w/2 EBM	w/3 EBM	w/4 EBM
<b>PW9130G700T</b>						
700/630	100%	5	N/A	N/A	N/A	N/A
525/473	75%	8	N/A	N/A	N/A	N/A
350/315	50%	14	N/A	N/A	N/A	N/A
175/158	25%	31	N/A	N/A	N/A	N/A
<b>PW9130G1000T-XLAU</b>						
1000/900	100%	6	31	51	82	100
750/675	75%	9	43	80	108	158
500/450	50%	19	68	111	192	246
250/225	25%	30	123	271	368	482
<b>PW9130G1500T-XLAU</b>						
1500/1350	100%	5	24	46	69	90
1125/1013	75%	7	32	68	96	126
750/675	50%	14	61	112	172	221
375/338	25%	29	115	218	335	374
<b>PW9130G2000T-XLAU</b>						
2000/1800	100%	11	44	79	115	162
1500/1350	75%	17	60	112	164	203
1000/900	50%	28	96	168	258	336
500/450	25%	55	169	336	490	608
<b>PW9130G3000T-XLAU</b>						
3000/2700	100%	6	21	51	66	93
2250/2025	75%	8	37	67	102	128
1500/1350	50%	15	60	100	169	215
750/675	25%	40	139	226	311	444

### RACK MODELS BATTERY RUNTIMES<sup>1</sup>

Load (VA/Watts)	% Of Load	Internal Batteries	w/1 EBM	w/2 EBM	w/3 EBM	w/4 EBM
<b>PW9130G1000R-XL2U AU</b>						
1000/900	100%	6	31	51	82	100
750/675	75%	9	43	80	108	158
500/450	50%	19	68	111	192	246
250/225	25%	30	123	271	368	482
<b>PW9130G1500R-XL2U AU</b>						
1500/1350	100%	5	24	46	69	90
1125/1013	75%	7	32	68	96	126
750/675	50%	14	61	112	172	221
375/338	25%	29	115	218	335	374
<b>PW9130G2000R-XL2U AU</b>						
2000/1800	100%	6	33	59	88	119
1500/1350	75%	9	47	83	130	161
1000/900	50%	17	72	129	183	260
500/450	25%	40	155	277	398	509
<b>PW9130G3000R-XL2U AU</b>						
3000/2700	100%	3	18	34	53	69
2250/2025	75%	5	29	53	79	103
1500/1350	50%	9	45	84	122	165
750/675	25%	26	102	175	263	344

1. Battery runtimes are approximate and may vary with equipment, configuration, battery age, temperature, etc.

powering down the UPS or protected loads. You can also start up the UPS and power its loads with battery power.

### Maximum battery runtime for critical systems

Using LanSafe power management software, you can independently control load segments, which are groups of receptacles on the rear panel of the UPS. This feature enables you to manage scheduled shut-downs and sequential startups of protected loads. During a power outage, you could shut down power to non-critical devices, thereby extending battery backup time available for critical devices. You can also use this feature to remotely re-boot locked-up equipment.

### Flexible deployment and communication options

**One platform, two form factors, dozens of choices.** Up to 3000 VA of UPS power is packed into only 2U of rack space. The tower option is about the size of a modern, compact PC, occupying only .5 metres or less of footprint. Choose from dozens of models offering the input plug type and output receptacles that suit your needs and voltage.

**Monitor and manage the UPS from anywhere.** Connectivity options are available for almost any networking environment. The standard unit comes with USB and RS-232 serial communication ports. You can customise your UPS by adding BestDock interface options for other types of communications, such as to:

- Control and monitor UPS status and meters via SNMP or a Web browser
- Monitor and shut down multiple servers with different operating systems

- Send relay-contact alarm notifications to remote security systems

### Intuitive, visual UPS monitoring and management

**Local.** An on-site user can configure and monitor many features of the 9130 using a large, bright, backlit display with easy navigation—available in multiple languages. LEDs provide at-a-glance insight into system status.

**Remote.** The 9130 comes complete with the LanSafe suite of power management software that provides control and visibility over all your UPS systems, using an intuitive, graphical interface and SNMP.

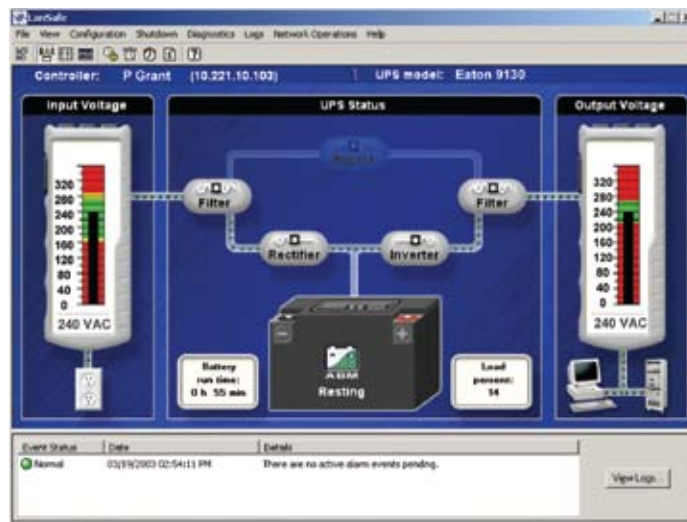
From a central vantage point, you have the visibility and control you need to ensure continuous up-time. For example, you can establish a prioritised shut-down of network devices and client/server applications, test all networked UPS systems from one node, analyse trends and network conditions, and stay informed of power problems by pager and email.

The LanSafe software package also includes multimedia demonstrations and a free trial for you to explore optional software for UPS performance monitoring/analysis and facility/data-center management.

### Enhance your UPS with complementary options

Count on Eaton for comprehensive power quality and infrastructure solutions. You can complement your 9130 with options that create a more effective, manageable and resilient data center or facility. For example:

- A **maintenance bypass** enables power to completely bypass the UPS, so it can be safely serviced or replaced without powering down critical systems.



### LanSafe answers network administrators' key questions with an intuitive visual display.

- Is input voltage within the acceptable range?
- If the power went out, how long could the UPS run on battery power?
- Is the UPS running on battery power right now?
- Are there any active events I need to know about?
- Is the UPS online or in bypass mode?
- Is output voltage within acceptable limits?
- What percent of UPS capacity is being used right now?
- Is the battery being charged or discharged?

- **Rugged and attractive enclosures** provide well-organized rack space for data centers, wiring closets, office environments and warehouses.
- **Power distribution units** streamline the distribution of power throughout a data center, rack or enclosure.
- **Monitoring systems**, such as LanSafe, give you the insight to effectively manage the facility and its power infrastructure for maximum uptime.
- **Support services**, such as our eNotify remote monitoring, ensure that your power infrastructure is intelligently designed, continuously monitored and managed for always-on operations.

years of R&D excellence, the new Eaton 9130 UPS delivers more real power—so you can power through any disruption and keep your organization's critical systems protected reliably and efficiently. Eaton will be there with you for the long term with premium warranty coverage and expert technical support.

**When you want maximum peace of mind**, count on Eaton's eNotify Remote Monitoring service. With this 7x24 service, our Customer Reliability Center (CRC) remotely monitors your UPS and contacts you in case of an emergency.

To find out more about the 9130 and other Eaton power quality solutions, visit our Web site at [www.powerware.com.au](http://www.powerware.com.au) or contact us at 1300 UPS UPS

### Eaton, your trusted ally for power quality

Representing more than 50

## TOWER MODELS

Catalogue number	Description	Rating (VA/Watts)	Input connection	Output receptacles	Dimensions H x W x D, in mm	Weight kg
<b>9130 Tower Models: 240V, 50/60 Hz<sup>1</sup></b>						
PW9130G700T-XLAU	PW9130 700G AUS TOWER	700/630	C14	(4) Aust 10A	250 x 160 x 355	13
PW9130G1000T-XLAU	PW9130 1000G AUS TOWER	1000/900	C14	(4) Aust 10A	250 x 160 x 383	15
PW9130G1500T-XLAU	PW9130 1500G AUS TOWER	1500/1350	C14	(4) Aust 10A	250 x 160 x 435	19
PW9130G2000T-XLAU	PW9130 2000G AUS TOWER	2000/1800	C14	(1) C13, (5) Aust 10A	345 x 214 x 410	35
PW9130G3000T-XLAU	PW9130 3000G AUS TOWER	3000/2700	C20	(1) C19, (5) Aust 15A	345 x 214 x 410	35
<b>Tower Extended Battery Modules<sup>1</sup></b>						
PW9130N1000T-EBM	PW9130 1000 EBM TOWER	NA	NA	NA	250 x 160 x 383	19
PW9130N1500T-EBM	PW9130 1500 EBM TOWER	NA	NA	NA	250 x 160 x 435	25
PW9130N3000T-EBM	PW9130 2000/3000 EBM TOWER	NA	NA	NA	345 x 214 x 410	50

1. Note: Height dimensions include feet, allow upto 150mm to depth for cable connections, accessories & ventilation



## RACK MODELS

Catalogue number	Description	Rating (VA/Watts)	Input connection	Output receptacles	Dimensions H x W x D, in mm	Weight kg
<b>9130 Rack Models: 240V, 50/60 Hz<sup>2</sup></b>						
PW9130G1000R-XL2UJU	PW9130 1000G AUS RACK	1000/900	C14	(4) C13, (2) Aust 10A	86.5 x 438 x 450	23
PW9130G1500R-XL2UJU	PW9130 1500G AUS RACK	1500/1350	C14	(4) C13, (2) Aust 10A	86.5 x 438 x 450	25
PW9130G2000R-XL2UJU	PW9130 2000G AUS RACK	2000/1800	C14	(4) C13, (4) Aust 10A	86.5 x 438 x 600	31
PW9130G3000R-XL2UJU	PW9130 3000G AUS RACK	3000/2700	C20	(4) C13, (1) C19, (3)	86.5 x 438 x 600	31
<b>Rack Extended Battery Modules<sup>2</sup></b>						
PW9130N1000R-EBM2U	PW9130 1000 EBM RACK	NA	NA	NA	86.5 x 438 x 438	29
PW9130N1500R-EBM2U	PW9130 1500 EBM RACK	NA	NA	NA	86.5 x 438 x 438	29
PW9130N3000R-EBM2U	PW9130 2000/3000 EBM RACK	NA	NA	NA	86.5 x 438 x 600	38

2. Note: allow upto 150mm to depth for cable connections, accessories & ventilation

# Technical specifications

## General

User interface	Graphical LCD with blue backlight and text in English, French, German, Russian and Spanish
LEDs	Four status-indicating LEDs
Topology	True online, double-conversion
Diagnostics	Full system self-test
UPS bypass	Automatic bypass
Dimensions	See models table
Rail kit	Included with all rackmount units

## Electrical input

Nominal voltage	240V
Voltage range	240V: 160–276 Vac (with load PF of 0.7)
Power draw of UPS	700VA: 3.0A @240V 1000VA: 4.3A @240V 1500VA: 6.5A @240V 2000VA: 8.7A @240V 3000VA: 13.0A @240V
Dedicated circuit breaker rating	<b>240V:</b> 700–2000 VA: 10A 3000 VA: 15A
Frequency	50/60 Hz
Frequency range	45–65 Hz

## Electrical output

Power factor	0.9
On utility voltage regulation	±3% of nominal
On battery voltage regulation	±3% of nominal
Efficiency	>95% in high-efficiency mode; >86% in online mode
Frequency regulation	±3% Hz online
Load crest factor	3 to 1

## Battery

Battery type	VRLA 12V/9 Ah (both internal and external)
Battery runtime	>3 minutes with internal batteries @100% load (0.7 PF)
Battery replacement	Hot-swappable internal and external batteries
Start-on-battery	Allows start of UPS without utility input

## Communications

Serial port	RS-232 standard, for interface to power management software
USB port	HID standard, for communicating with Windows 98 and ME computers
Relay output	Common alarm standard
Communications slot	Optional communication slots (BD Slot)
Optional communication cards	ConnectUPS-BD network management card ModBus/JBus AS400/Relay card
Cables included	USB and serial cable Input power cable 2 x 10Amp IEC to IEC output cable (rack models only)

## Environmental

Safety markings	240V: CE, GS
EMC markings	240V: CE (per IEC/EN62040-2: Emissions, Category C1; Immunity, Category C2)
Audible noise	<50 dB
Ambient operating	0°C to +40°C
Storage temperature	-20°C to +40°C with batteries and -25°C to +55°C without batteries
Relative humidity	5–90% non-condensing

## Heat dissipation for all voltages:

9130 model	Normal mode, BTUs/hr	On battery, BTUs/hr
700 VA	350	554
1000 VA	500	674
1500 VA	750	1,011
2000 VA	838	1,348
2500 VA	1,047	1,463
3000 VA	1,257	1,755



Eaton Industries Pty. Ltd.  
Electrical Group  
Head Office:  
10 Kent Road Mascot,  
NSW 2020 Australia  
1300 UPS UPS (1300 877 877)  
[www.powerware.com.au](http://www.powerware.com.au)

Eaton, Powerware, ABM, Flex, LanSafe, PowerChain Management and PowerTrust are trade names, trademarks, and/or service marks of Eaton Corporation or its subsidiaries and affiliates. All other trademarks are the property of their respective owners.

© 2008 Eaton Corporation  
All Rights Reserved  
Printed in AUS  
9130FXA  
November 2008